



# American Indians and the Organ Donation Process

Misty Wilkie-Condif, PhD, RN

Bemidji State University

**TURTLE MOUNTAIN  
BAND OF CHIPPEWA**



*Wish you were here to see these mountains*

*It's just how to be every year*

*It's just how to be every year*

*Wish you were here to see these mountains*

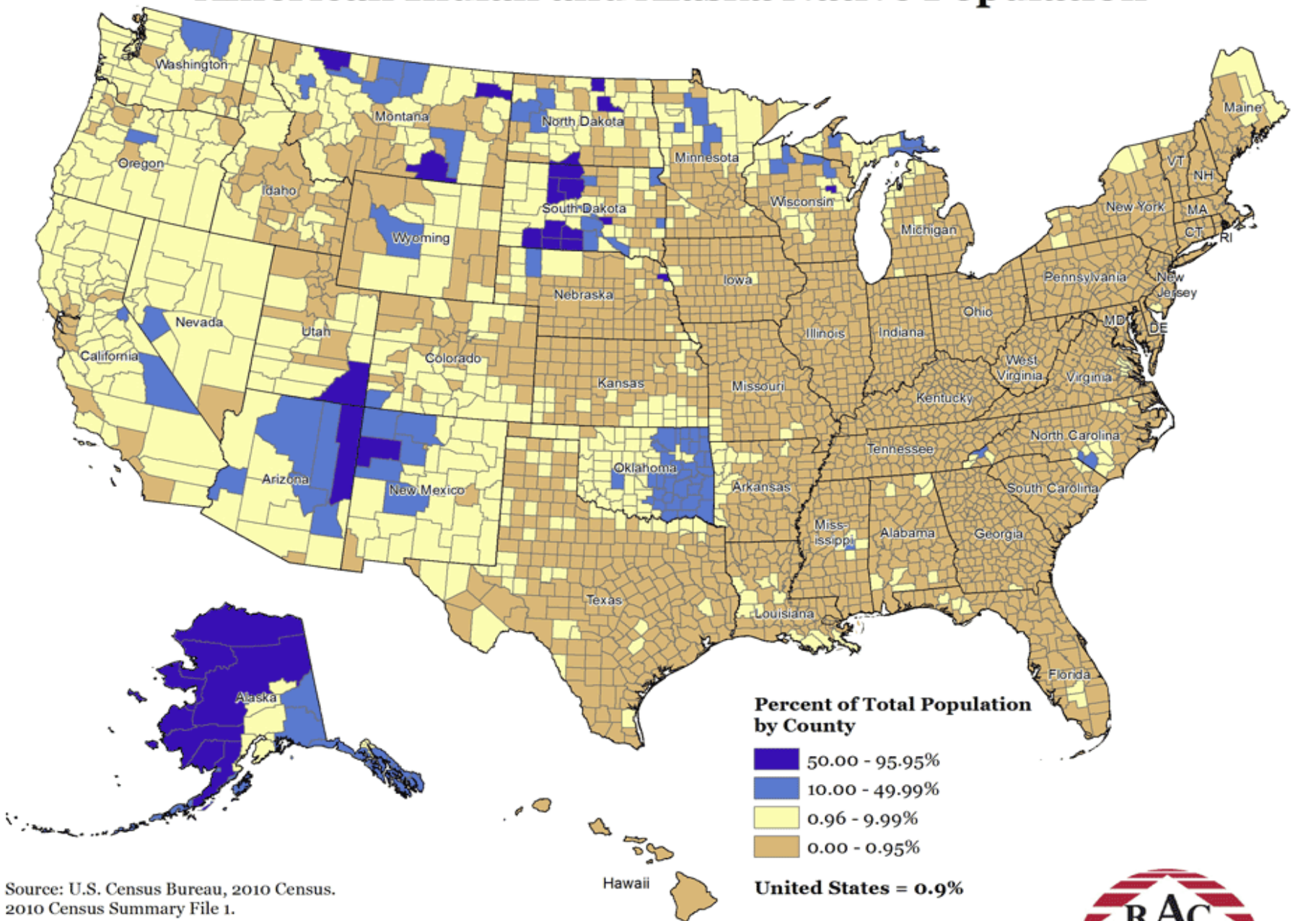
*Wish you were here to see these mountains*

*Wish you were here to see these mountains*

*Wish you were here to see these mountains*



# American Indian and Alaska Native Population



Source: U.S. Census Bureau, 2010 Census, 2010 Census Summary File 1.

Note: Alaska and Hawaii not shown to scale

# Statistics for American Indians

- 5.2 million American Indian and Alaska Natives
  - 48 deceased donors in 2014
- 2% of the US population
- 566 federally recognized American Indian tribes
- 30% live in poverty (US national average is 15%)

# American Indian History

- Genocide
- Forced to live on reservations
- Enrolled in tribes by blood quantum
- Historically, we have been a kind and generous people with a genuine interest in helping others



# The “Look” of American Indians



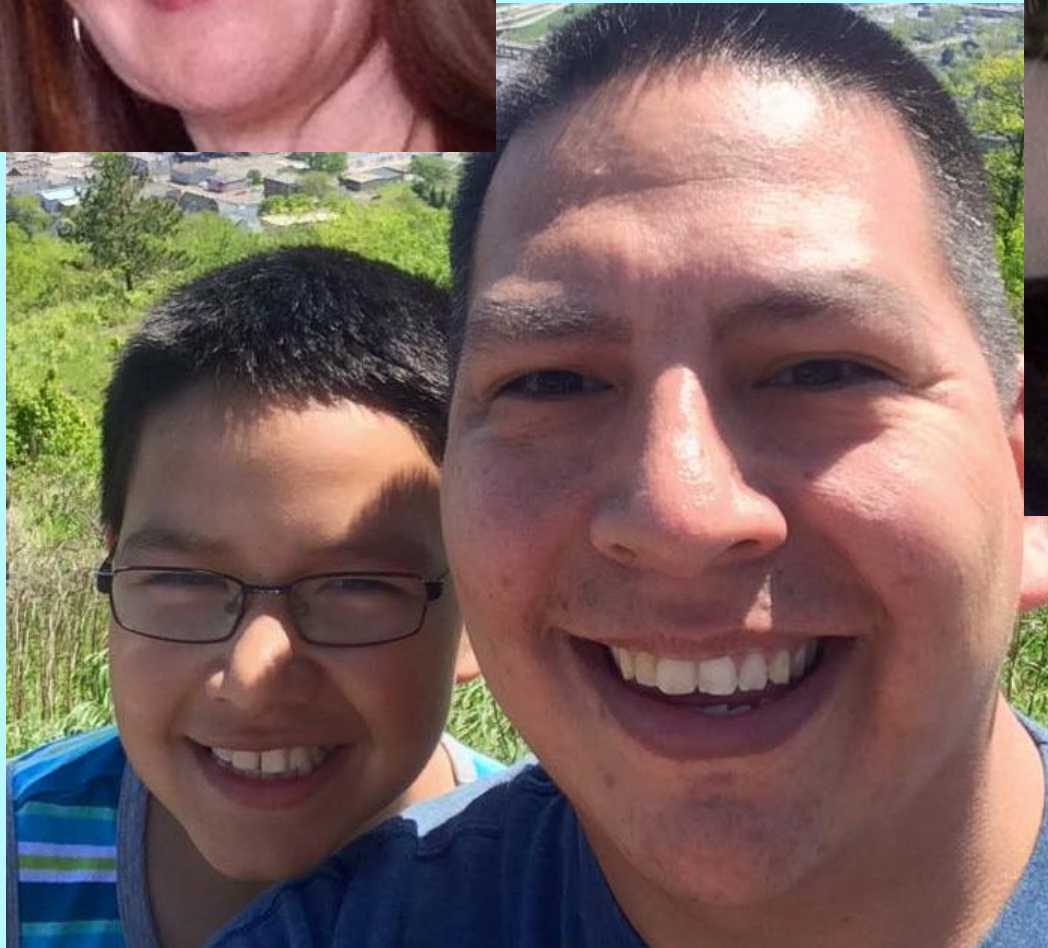
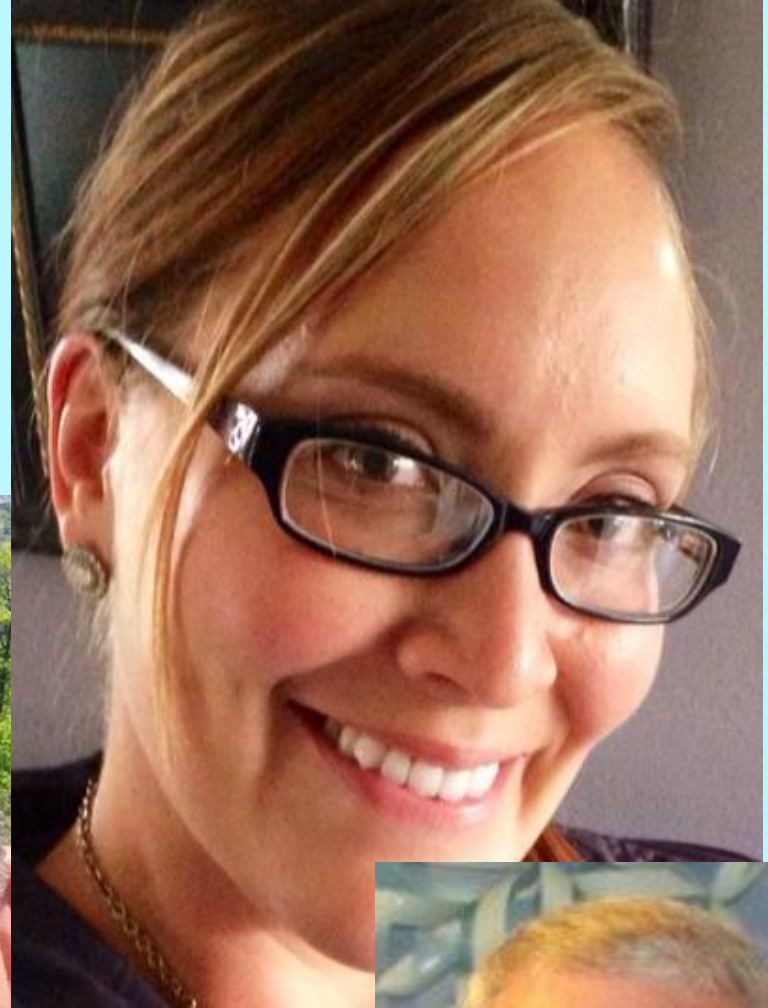
- Varying skin, eye and hair color
- Shape of the eyes, high cheek bones
- Often confused with other races











# Background

- ½ of American Indian (AI) adults are diagnosed with diabetes
- AI are 3.5 times more likely to have end-stage renal disease
- Over 1,200 AI waiting for organs



# Cultural Factors

- Family oriented: involved in decision-making
  - Always consult elders
- Eye contact and communication
- Strong connection to reservation and other American Indians
- May struggle with traditional vs. religious (Christianity) beliefs
- Genocide, breaking of treaties, boarding schools caused lack of trust
- Indian Health Service contract health issues
- Reservations are located in remote areas

# Cultural Factors continued

- Traditional belief of body needing to remain whole (including placenta and limbs)
- Deceased organ donation is rarely done
- Medicine men and women perform ceremonies making organ donation more culturally acceptable