

# Working with AMAT: An Update from the Donation and Transplantation Community of Practice (DTCP)

Kevin A. Myer  
President & CEO  
LifeGift  
Houston, Texas



- Board member AMAT
- Speaking on behalf of the Alliance for Organ Donation and Transplantation. Opinions expressed may not represent the official position of the Alliance or the Donation and Transplantation Community of Practice (DCTP)...but I will try to represent their opinions!
- Observer rather than an expert



# DTCP: Awareness of Multicultural Opportunities?

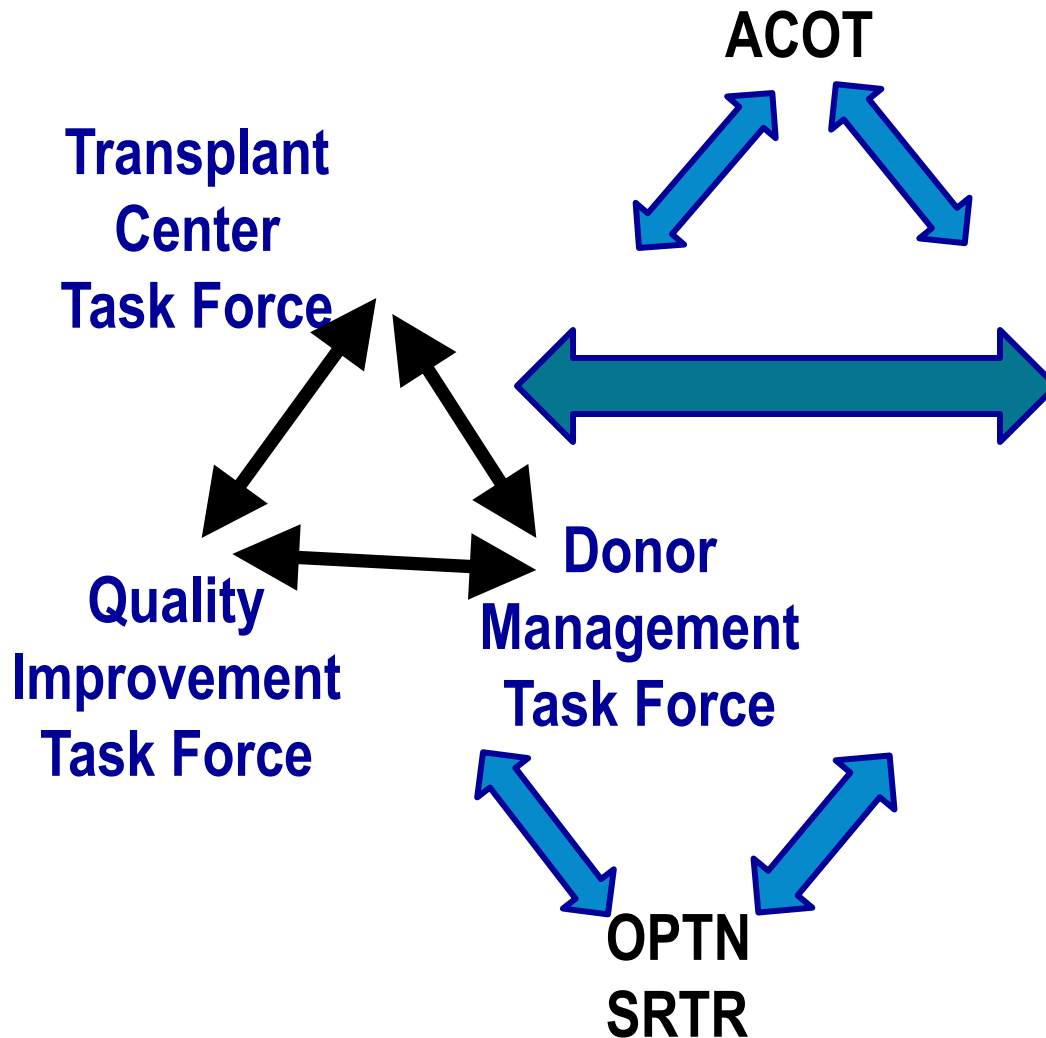
- Donation and Transplantation Community of Practice is keenly interested in the areas AMAT is exploring & advocating.
- Through various initiatives, feedback from communities & donation professionals, the **Alliance for Donation & Transplantation** realizes:
  - The community is increasingly diverse & multicultural
  - These changes are impacting donation & transplantation
  - The potential impact, underlying causes & future ramifications are poorly understood





# Strategic Process of DTCP Activities

(Used with permission of DTCP)



## Meetings:

- DSA/Regional
- Pediatrics
- Donor Management
- Donor Research
- Performance Improvement
- Leadership
- Multicultural Perspectives

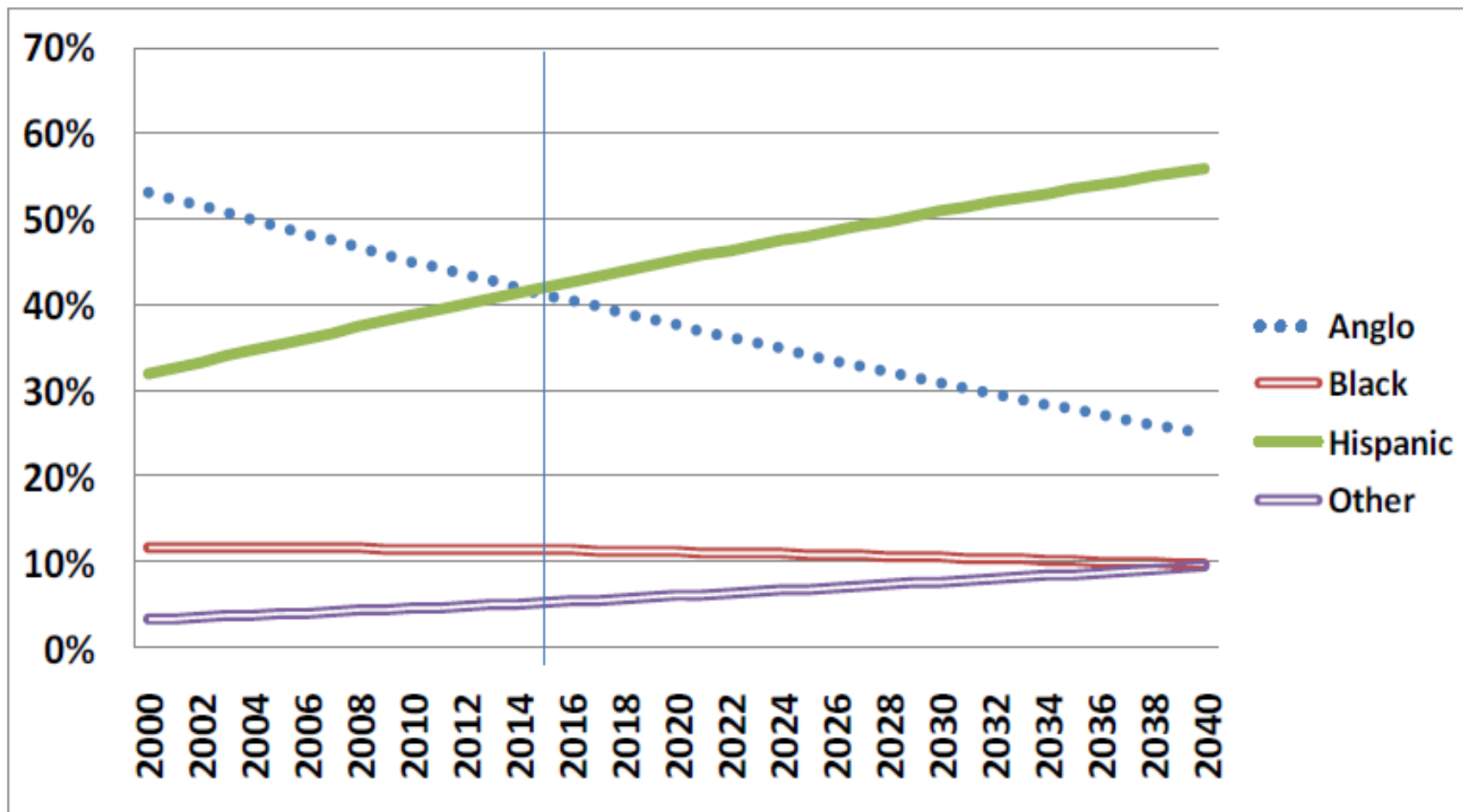
## Partners:

- Alliance, HRSA
- NATCO, **AMAT**, AOPO, DLA
- AST, ASTS
- AHA, ACHE, SCCM
- And many more!



(via HRSA cooperative agreement to Alliance for Organ Donation & Transplantation )

# Projected Racial and Ethnic Percent: Texas , 2000-2040



Source: Texas State Data Center 2008 Population Projections , 2000-2007 Migration Scenario

# Hispanic Health Profile

Houston/Harris County



Population Growth, Demographics, Chronic Disease and Health Disparities

CITY OF HOUSTON  
Department of Health and Human Services  
and  
Hispanic Health Coalition  
2013





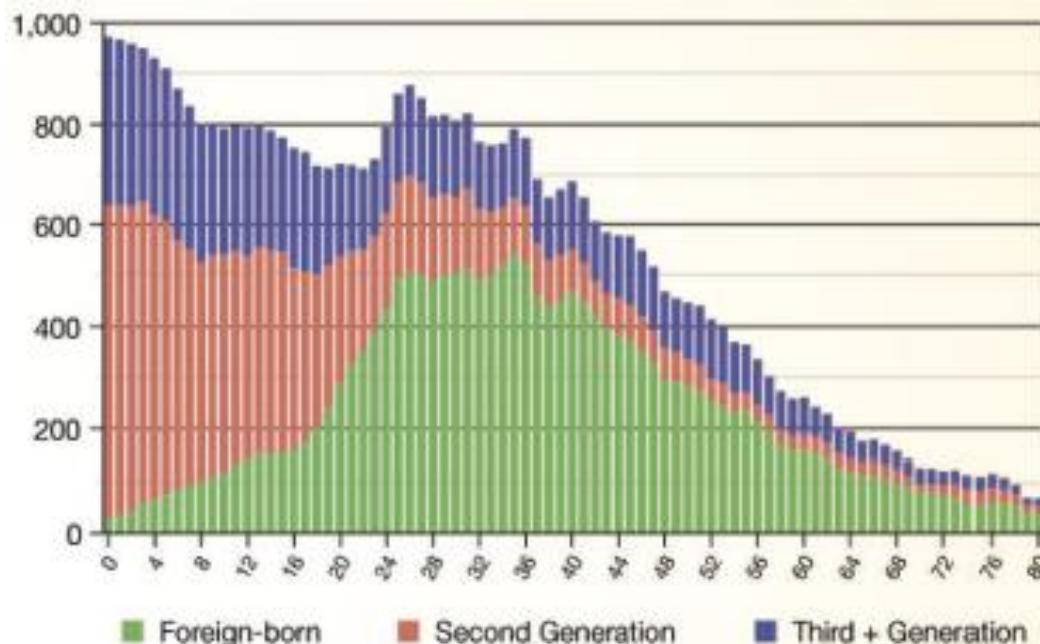
# DTCP Is Interested In Enhancing Baseline Knowledge

Tremendous growth in the Hispanic population across the U.S. has been attributed to higher fertility rates and a large influx of new immigrants. Texas has a large population of Hispanics and Harris County, in particular, has experienced a huge growth in this population.

This profile uses the term “Hispanic” to refer to any person of Cuban, Mexican, Puerto Rican, South or Central American or other Spanish culture or origin, regardless of race as indicated in the Standards for the Classification of Federal Data on Race and Ethnicity (Humes, Jones, & Ramirez, 2011). However, it is important to recognize the extensive diversity among those with Hispanic ethnicity since cultural norms, social status and socio-demographic factors can be vastly different depending in part on the region from which they originate. Hispanics can self-identify with any of the race groups.



U.S. Hispanics by Age and Generation  
in thousands



Source: U.S. Census Bureau Current Population Survey for March, 2007  
Copyright © 2007, Instituto Fe y Vida Research and Resource Center

Since 2000, among Hispanics, the foreign-born share of each major Hispanic origin group has declined. Overall, the share of Hispanics that is foreign born decreased from 40 percent in 2000 to 37 percent in 2010. The largest decline—13 percentage points—was among Salvadorians (from 76% to 62%).

Source: Pew Hispanic Center, Tabulation of 2010 ACS and 2000 Census, released June 27, 2012. [www.pewhispanic.org](http://www.pewhispanic.org)



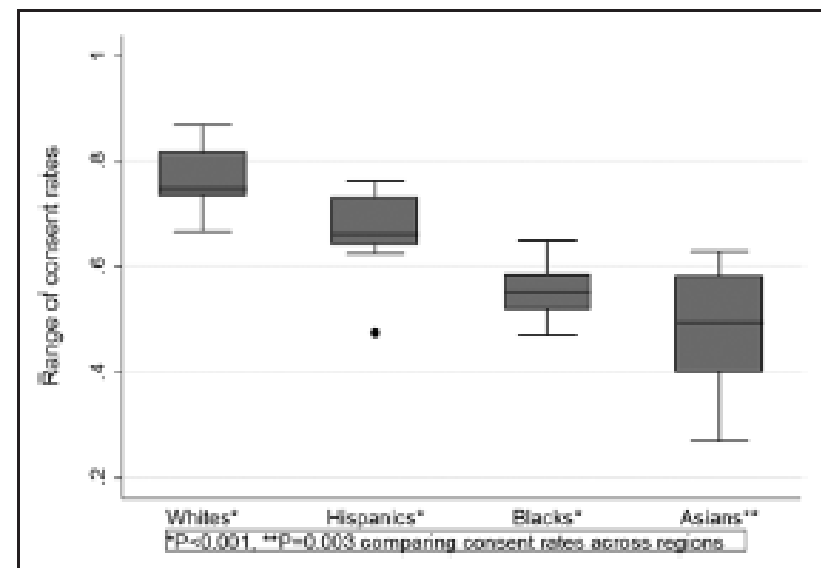
## Deceased Organ Donation Consent Rates Among Racial and Ethnic Minorities and Older Potential Donors\*

David S. Goldberg, MD, MSCE<sup>1,2</sup>; Scott D. Halpern, MD, PhD<sup>2,3,4</sup>; Peter P. Reese, MD, MSCE<sup>2,4,5</sup>

496

www.ccmjournal.org

February 2013 • Volume 41 • Number 2

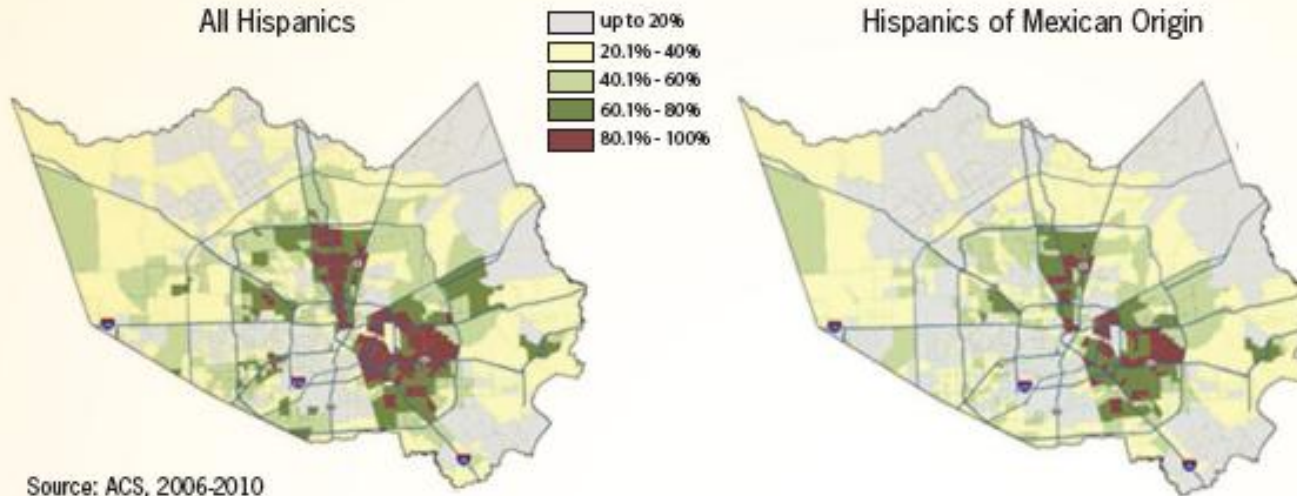


### Differences in Consent Rates

**Racial/Ethnic Variability.** Consent was significantly more likely to be obtained from white patients (77.0%), compared to Hispanics (67.5%), "other" races (59.0%), blacks (54.9%), and Asians (48.1%) ( $p < 0.001$ ; Table 3 compares consent rates across racial/ethnic categories). There was substantial variability in consent rates by race/ethnicity across UNOS regions (Fig. 2).

**Figure 2.** Distributions of donation consent rates across United Network for Organ Sharing regions, by race/ethnicity category.

## Proportion of Hispanic Population by Census Tract



A majority of Hispanics according to a Pew study (51%), say they most often identify themselves by their family's country of origin; just 24% say they prefer a pan-ethnic label.

Source: Pew Research Center  
<http://www.pewhispanic.org/2012/04/04/when-labels-don't-fit-hispanics-and-their-views-of-identity/>



# Upcoming DTCP Conference

- <http://www.organdonationalliance.org/donation-perspectives-addressing-the-roles-of-culture-language-race-and-community/>

October 16-17, 2013 | Chase Park Plaza Hotel | St. Louis, MO

**Register Now**

**(<https://www.regonline.com/DonationPerspectives>)**

## Program Description

As the U.S. population becomes more diverse, healthcare organizations are interacting with people from many different cultural and linguistic backgrounds. Research confirms that there is a critical link between cultural attitudes and traditions in relation to the decision-making process concerning organ and tissue donation. Through shared best practices and initiatives, the Organ Donation and Transplantation Alliance, through a cooperative agreement with HRSA, is pleased to offer **Donation Perspectives: Addressing the Roles of Culture, Language, Race, and Community**. Organizations are encouraged to put a team together focused on learning best practices to improve authorization rates among diverse populations.

Addressing multicultural issues and gaining cultural competence is not just the right thing to do, it is good business practice. As the nation becomes increasingly diverse, improving cultural and linguistic competency across donation service areas can be one of the most powerful levers for increasing organ donation and transplantation.





# Donation Perspectives: Addressing the Roles of Culture, Language, Race and Community

## Intent

- Teach leadership how to be more strategic around multicultural perspectives in donation
- Learn how to map out donation opportunities by drilling down into DSA data
- Learn how to best utilize DSA resources to maximize multicultural donation opportunities
- Learn how to measure donation metrics that include multicultural aspects
- Provide best practice tools to participants to bring back to organization to help hard-wire multicultural aspects to improve donation outcomes
- Discover the cultural variation in DSA
- Prepare for multicultural boom across the nation

## Target Audience

Members from OPOs, Transplant Centers, and Donor Hospitals serving diverse populations





# AMAT Has a Unique Perspective & Expertise to Offer

- DTCP
- Alliance for Donation and Transplantation
- OPTN
- SRTR
- CMS





**Thank you!**

**22<sup>ND</sup> ANNUAL MEETING  
SEPT 16-19, 2014  
HOUSTON, TEXAS**

